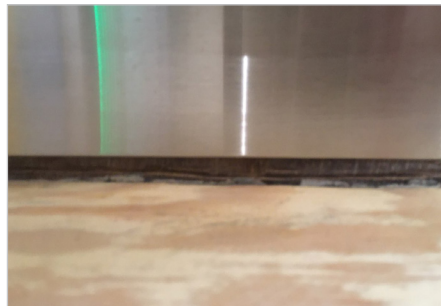
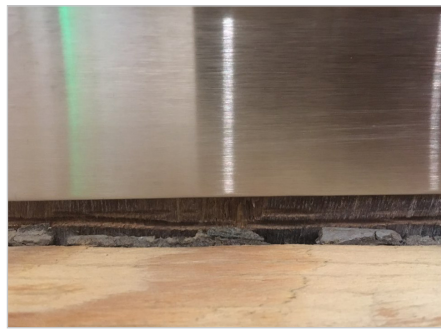


Elevator Flooring System

Installation Instructions for Epoxy & MMA Coatings

A Elevator Cab Floor Preparation (steps 1-3)

1. Use exterior grade plywood at least 1/2" thick (3/4" preferred) and securely attach it to the metal steel deck of the cage. This requires using screws at 6" spacing on center and an exterior grade adhesive between metal and the plywood. The plywood must be completely free of wax, varnish or any foreign material. DO NOT use interior grade plywood as it delaminates easily and could result in failure of the epoxy flooring system.
2. Consider the following plywood placement. The longer joints on the 8 feet sides that butt adjacent sheets should be spaced 1/8" to 1/4" apart. On the shorter side of the plywood, the space should be 1/16" to 1/8". Stagger plywood joints when possible.
3. After the plywood is anchored, the surface must be sanded to remove all foreign matter, opening the pores of the plywood.



Far Left: The plywood substrate has been installed and sanded in preparation for the subsequent epoxy or MMA layers to come. Note that the joints in the plywood have been sealed. Be sure to use the appropriate sealer for either the epoxy or MMA coating kits.

Left above: Joint where the plywood meets the wall of the elevator cab. The gap is roughly the height of the floor coating.

Left below: Another detail photo of the plywood/wall joint after sanding.

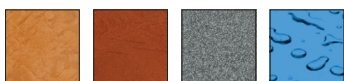
Next Steps

Epoxy Floor Coating System: Follow the instructions on Page 2, Section B.

MMA Floor Coating System: Follow the instructions on Page 2, Section C. (Skip Section B)

Differences between Epoxy and MMA based system

Epoxy	Methyl Methacrylate (MMA)
Number of steps spread over 3 to 4 days	Installation steps can be completed in 1 or 2 days
Nearly odor free. Can be installed in occupied building	Need thorough ventilation system in occupied buildings
Material cost is less than MMA, but labor component may be more due to number of steps spread over 3 to 4 days	Material cost may be more than epoxy, but labor cost is less since the installation can be completed in 1 or 2 days.
Popular metallic epoxy systems can be incorporated for more designer looks	Suitable for freight or service elevators



B Epoxy Coating Installation (steps 4–9)

4. The joints must be filled with fast setting epoxy resin then cover the joint with minimum 4" wide fiberglass cloth and fast setting epoxy.
5. Prime the sanded plywood surface with Perdure E02 and allow it to dry for 10 to 12 hours.
6. Subsequently apply flexible epoxy membrane Perdure FE80 at 40 to 50 sq.ft. per gallon. Broadcast 30 mesh sand over wet Perdure FE80. Allow Perdure FE80 to cure for 18 to 24 hours before proceeding to the next step.
7. Apply Perdure E10 blended with Self Leveling additive at a thickness of 1/16" allow it to cure for at least 18 to 24 hours before proceeding to the next step.
8. Decorative quartz or Endura Chips can be broadcasted if decorative finishes are desired by the property manager/owner
9. Apply a suitable topcoat (Choose from Perdure P72/P90 or Perdure U90 (Gloss or Satin) with an anti-skid additive if necessary.

C Methyl Methacrylate (MMA) Coating Installation (steps 4–9)

4. The joints must be filled with Macrylex F98 PUMMA mixed with 15% (by volume) with Perdure SL Additive and requires the addition of Macrylex H00 to start the hardening process.
5. Cover the joints between the plywood with a fiber glass cloth.
6. Prime the sanded plywood surface with Macrylex P12 primer. Broadcast 30 mesh sand on wet primer and allow it to cure for couple of hours. In extreme cold conditions add cold temperature accelerator as described in the technical data sheet.
7. Apply Macrylex F98 blended with self-leveling additive, Perdure SLA as per the technical data sheet to achieve the desired thickness (1/8" to 1/4"). Allow it to cure for 2 to 4 hours.
8. Decorative quartz or Endura Chips can be broadcasted if decorative finishes are desired by the property manager/owner
9. Apply Macrylex S26 sealer to protect the surface.



Left: Primer and 30 mesh sand have been applied over cleanly sanded plywood.

Above: Joint where plywood meets the edge of the cab has been sealed.

Right: An epoxy coating been installed.

