

Perdure E20

100% solids epoxy coating

DESCRIPTION

Perdure E20 is a 100% solids, pigmented epoxy floor coating designed to provide high gloss, chemical resistant protection. Perdure E20 should be used wherever a high build, corrosive resistant, protective floor coating is required. It is essentially odorless and can, therefore, be used in occupied areas. Perdure E20 provides a smooth, high gloss finish or, in a heavy body form, an orange peel, texture finish.

ADVANTAGES

- Low odor during application and cure
- Zero VOCEasy application and clean-up

SUBSTRATE REQUIREMENTS

- Substrate temperature must be a minimum of 50°F and relative humidity below 85% for proper curing.
- Substrate must be free of dirt, waxes, curing agents and other foreign materials
- Not recommended for immersion in oxidizing agents or mineral acids

COMPOSITION

- 100% solids epoxy, aliphatic amines and fillers.

COLOR SELECTION

- Perdure E20 is available in Standard Colors and custom colors as approved.

APPLICATION

Surface Preparation is the most critical portion of any successful resinous flooring system application. All substrates must be properly prepared as outlined in Düraamen's Technical Bulletin # 1. Work must be performed by trained or experienced contractors or maintenance personnel. The Düraamen Company's service department is pleased to answer any technical questions.

INSTALLATION

Perdure E20 is spread with a trowel or squeegee and back-rolled with a medium or short nap roller. Care should be taken to minimize the entrapment of air caused by over-rolling. Perdure E20 can also be applied by airless or conventional spray.

For complete installation instructions, contact your Düraamen representative.

CLEAN UP

Clean skin with soap and water. Tools and equipment should be cleaned with Xylene or Lacquer thinner. Consult MSDS for safety and health precautions.

COVERAGE

Perdure E20 yields 160ft² per gallon at 10mils film thickness.

AVAILABILITY

Perdure E20 is available throughout the United States and Canada. Contact Düraamen representative in your area for details.

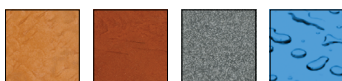
MAINTENANCE

After completing the application of Perdure E20, the installer should provide the owner with maintenance instructions.

Perdure E20 is easily cleaned with neutral soaps or detergents.

TECHNICAL SERVICE

Düraamen Engineered Products, Inc. provides services and consultations on material selection, specification, troubleshooting, and other information on the proper repair and protection of concrete surfaces.



TECHNICAL DATA

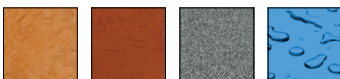
Viscosity @ 750F	950cps
Mixing Ratio	2 parts A to 1 parts B by volume
Solids Content	100% by volume
Volatile Organic Content	-0-
Weight Per gallon	11.5 pounds per gallon, mixed

CURE/DRY TIME

Pot Life	30-35 minutes
Dry to Touch	10-12 hours @ 75°F
Re-Coat	12-16 hours @ 75°F
Light Traffic	24 hours @ 75°F
Full cure & maximum resistance	5 days

WARRANTY

Information regarding Duraamen products is based upon extensive research provided by the supplier of the raw materials. By making such information available, Duraamen Engineered Products Inc. does not assume any liability beyond express terms of our standard limited material warranty. Duraamen Engineered Products does not warrant the accuracy or completeness of any such information, whether conveyed orally or in writing, but to the best of our knowledge believe it to be accurate. We reserve the right at any time and without notice to update or improve our products and process for the intended use or application. Duraamen Engineered Products (Duraamen) warrants for a period of one (1) year that its products will be free of manufacturing defects and will be in conformity with published specifications when handled, stored, mixed and applied in accordance with recommendations of Duraamen. If any product fails to meet this warranty, the liability of Duraamen will be limited to replacement of any non-conforming material if notice of such non-conformity is given to Duraamen within 1 (one) year of delivery of materials. Duraamen may in its discretion refund the price received by Duraamen in lieu of replacing the material. No customer, distributor, or representative of Duraamen is authorized to change or modify the published specifications of this warranty in anyway. In order to obtain replacement or refund the customer must provide written notice containing full details of the non-conformity. Duraamen reserves the right to inspect the non-conforming material prior to replacement EXCEPT FOR THE EXPRESSED WARRANTY STATED ABOVE, THERE ARE NO OTHER WARRANTIES, EXPRESSED OR IMPLIED, INCLUDING WITHOUT LIMITATION, ANY IMPLIED WARRANTY OR MERCHANTABILITY OR FITNESS FOR PURPOSE. DURAAMEN'S OBLIGATION SHALL NOT EXTEND BEYOND THE OBLIGATIONS EXPRESSLY UNDERTAKEN ABOVE AND DURAAMEN SHALL HAVE NO LIABILITY OR RESPONSIBILITY TO THE PURCHASER OR ANY THIRD PARTY FOR ANY LOSS, COST EXPENSE, DAMAGE OR LIABILITY, WHETHER DIRECT OR INDIRECT, OR FOR INCIDENTAL OR CONSEQUENTIAL DAMAGES.



duraamen engineered products, inc.

20 Haypress Road, Suite 323 Cranbury, NJ 08512 | duraamen.com | info@duraamen.com | 1.866.835.6595