

Chroma Cast

color hardener for freshly poured concrete



DESCRIPTION

Chroma Cast Color Hardener is a unique blend of UV resistant inorganic pigments, specialty polymers, cement and highly abrasive aggregates designed to be incorporated into the surface of freshly poured concrete. Chroma Cast not only adds vibrant or subtle colors to the concrete surface but also increases the surface density and abrasion resistance. It is ideal for use with textured concrete, but is also excellent for regular trowelled or broom-finished concrete, or for producing adjacent borders in contrasting colors. For stamped, color hardened, antiqued surfaces Düraamen's Chroma Release is recommended to achieve attractive, mottled color patterns.

ADVANTAGES

- Superior abrasion resistance
- Increased surface density
- UV stable, Zero VOC
- Ease and speed of use
- Extensive color range
- Durable in freeze/thaw conditions

SUBSTRATE REQUIREMENTS

- Substrate must be uniformly graded, compacted and drained
- Substrate must NOT be soft, frozen or muddy
- On or below grade installation must have an efficient vapor barrier under the slab (min 10-15 mil).
- Moisture vapor transmission must be less than 3 lb. per ASTM F1869 and less than 80% RH per ASTM F2170 unless Düraamen moisture mitigation system is used.)
- No standing free water on the substrate before pouring concrete
- Standards specified by ACI/ASTM must be followed

COMPOSITION

Unique blend of UV resistant inorganic pigments, specialty polymers, cement and abrasive aggregates

APPLICATION

The adjacent areas shall be protected by plastic sheeting during the pouring of concrete and application of Chroma Cast and subsequent finishing of the concrete. Chroma Cast shall be fluffed before broadcasting on the concrete surface so that the ingredients are uniformly distributed. The color hardener shall be applied only after the bleed water from the surface of the concrete disappears and the floating process does not disrupt the level of the surface. Chroma Cast is then hand-broadcasted uniformly across the surface of the

freshly poured concrete. Within few minutes, the moisture from the concrete itself should turn the dry powder into a moist powder. DO NOT add any additional water to the surface of the concrete. At this point, float the hardener into the surface. Do not use a trowel at this point. Broadcast a second application of Chroma Cast across the surface to ensure consistent coverage. Float into concrete as before, then apply Chroma Release (antique release agent) if stamping. Otherwise, proceed with standard finishing of concrete, but do not hard trowel as it will cause discoloration.

COVERAGE

Coverage may vary depending on color choice, application techniques and job site conditions. Typically the coverage will be 100 sq. ft. per 60 lb. pail. The lighter colors may require 80-90 lb per 100 sq. ft..

SEALING

It is highly recommended to seal the concrete surface. A clear curing and sealing compound should be applied for curing purposes. If using in conjunction with release agent or chemical staining, the sealing process is different. Please consult your technical representative to confirm the correct sealing procedure.

COLOR SELECTION

Chroma Cast color hardener is available in a variety of colors as shown in the color chart. The actual colors achieved will depend upon the finishing, curing and sealing process. Adequate representative size samples must be produced and approved by concerned parties before proceeding with the project.

STORAGE & SHELF LIFE

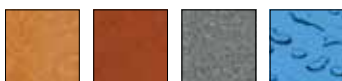
Under normal conditions, the shelf life Chroma Cast color hardener is 1 year. Storage must be under roof and off the floor.

AVAILABILITY

Chroma Cast is available throughout the United States and Canada. Contact Düraamen representative in your area for details.

MAINTENANCE

After completing the installation, the applicator should provide the owner with maintenance instructions. If floors become slippery due to animal fats, oil, grease, or soap film, clean and rinse thoroughly. Chroma Cast is easily cleaned with neutral soaps or detergents. Routine mechanical scrubbing is recommended for all surfaces having a non-skid texture. Treating the surface with a floor finish (Smartgard) is optional. Long periods of heavy traffic may cause wear patterns necessitating application of a finish coat.

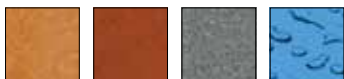


düraamen engineered products, inc.

20 Haypress Road, Suite 323 Cranbury, NJ 08512 | duraamen.com | info@duraamen.com | 1.866.835.6595

WARRANTY

Information regarding Duraamen products is based upon extensive research provided by the supplier of the raw materials. By making such information available, Duraamen Engineered Products Inc. does not assume any liability beyond express terms of our standard limited material warranty. Duraamen Engineered Products does not warrant the accuracy or completeness of any such information, whether conveyed orally or in writing, but to the best of our knowledge believe it to be accurate. We reserve the right at any time and without notice to update or improve our products and process for the intended use or application. Duraamen Engineered Products (Duraamen) warrants for a period of one (1) year that its products will be free of manufacturing defects and will be in conformity with published specifications when handled, stored, mixed and applied in accordance with recommendations of Duraamen. If any product fails to meet this warranty, the liability of Duraamen will be limited to replacement of any non-conforming material if notice of such non-conformity is given to Duraamen within 1 (one) year of delivery of materials. Duraamen may in its discretion refund the price received by Duraamen in lieu of replacing the material. No customer, distributor, or representative of Duraamen is authorized to change or modify the published specifications of this warranty in anyway. In order to obtain replacement or refund the customer must provide written notice containing full details of the non-conformity. Duraamen reserves the right to inspect the non-conforming material prior to replacement EXCEPT FOR THE EXPRESSED WARRANTY STATED ABOVE, THERE ARE NO OTHER WARRANTIES, EXPRESSED OR IMPLIED, INCLUDING WITHOUT LIMITATION, ANY IMPLIED WARRANTY OR MERCHANTABILITY OR FITNESS FOR PURPOSE. DURAAMEN'S OBLIGATION SHALL NOT EXTEND BEYOND THE OBLIGATIONS EXPRESSLY UNDERTAKEN ABOVE AND DURAAMEN SHALL HAVE NO LIABILITY OR RESPONSIBILITY TO THE PURCHASER OR ANY THIRD PARTY FOR ANY LOSS, COST EXPENSE, DAMAGE OR LIABILITY, WHETHER DIRECT OR INDIRECT, OR FOR INCIDENTAL OR CONSEQUENTIAL DAMAGES.



duraamen engineered products, inc.

20 Haypress Road, Suite 323 Cranbury, NJ 08512 | duraamen.com | info@duraamen.com | 1.866.835.6595