

# color hardner & antique release agent

by **düraamen**

*Premium Grade Products for the Professional Concrete Artisan*



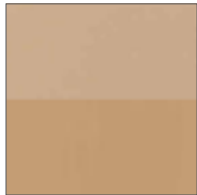
320 saffron



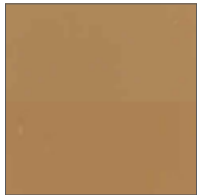
1070 toffee



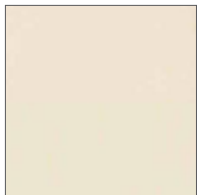
310 hazelnut



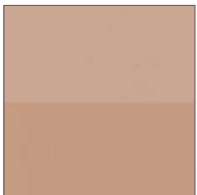
735 golden honey



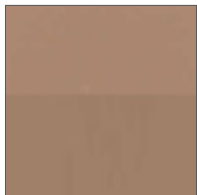
1055 copper



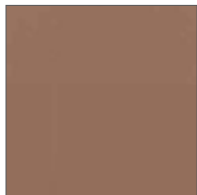
1030 vanilla



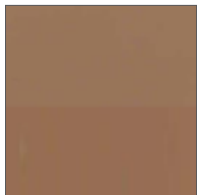
1015 fawn



375 maple



525 rosewood



1050 mushroom



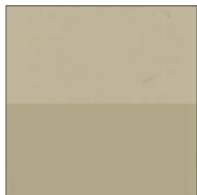
1080 wheat



1090 khaki



250 seashell



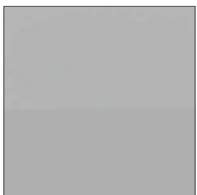
1040 tumbleweed



325 fennel



625 alabaster



615 aluminum



1010 taupe



1820 sage



1045 olive

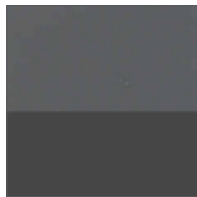
düraamen provides this color guide for preliminary color selection only. Please refer to a physical sample prior to making a final selection. Contact düraamen for assistance.

# color hardner & antique release agent

by **düraamen**



600 battleship



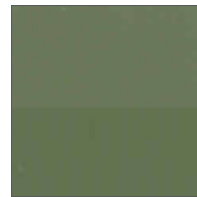
200 granite



100 coal



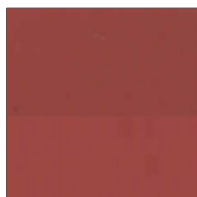
650 prussian blue



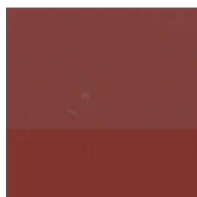
825 cypress



1075 thistle



500 cayenne



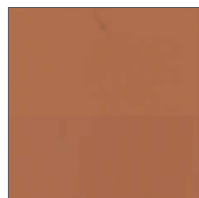
550 firebrick



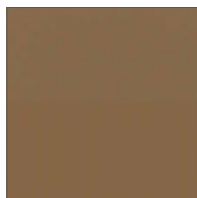
400 cocoa bean



810 espresso



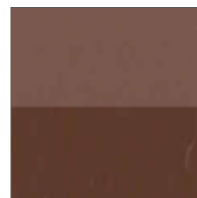
515 spice



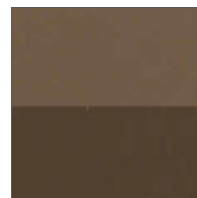
350 pecan



700 spanish tile



425 mahogany



300 chocolate

## Notes on Color Selection

The color chips shown are representative of a smooth trowelled finish. The top half of the chip is unsealed; the lower portion represents concrete sealed with a solvent-based clear such as Perdüre A01 and/or Perdüre AU52.

Concrete is a natural material. Sand, cement, and aggregate all vary in different regions and from different plants. Different finishing techniques, textures, sealers, water content, weather-related jobsite factors, and curing methods will affect the final shade result. Keep in mind that concrete color products are not paint products, where an exact match is always easy or even possible. The color chips shown attempt to represent the shades as closely as possible, but Düraamen Products cannot guarantee an exact match because of the factors mentioned above. Our recommendation is to always prepare a sample prior to final color selection.

page 2 of 2

düraamen provides this color guide for preliminary color selection only. Please refer to a physical sample prior to making a final selection. Contact düraamen for assistance.