

# Macrylex

## Methyl Methacrylate Resin Flooring Systems

### Sacrifice Nothing. Speed & Durability are Built-in.

Duraamen's Macrylex line of reactive, methyl methacrylate (MMA) floor products provide a complete solution for any industrial or commercial flooring project when quick return-to-service is needed, and durability is paramount.

**Macrylex Cures Fast.** It may be installed at nearly any temperature and cures in a matter of hours.

**Macrylex is Durable.** It withstands abrasions, impacts, and moisture. With the addition of chemical resistant or anti-bacterial additives, Macrylex can be used in the most demanding environments.

### Design the Macrylex floor system that fits your project's requirements.

#### Macrylex Self-leveling Mortar

Pigmented MMA Self-Leveling mortar system provides years of protection and performance where the floor is subjected to extreme or tortuous conditions. Choose from several color options designed for industrial and commercial flooring use.

With the use of suitable top coats and additives, Macrylex can be made chemical and/or bacteria resistant for pharmaceutical/chemical production plants, food processing facilities and freezers.

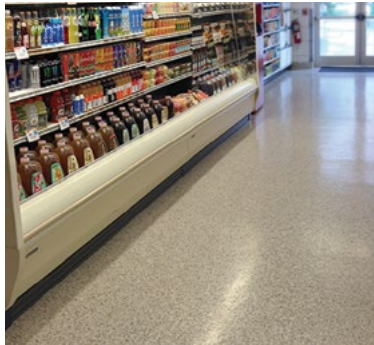
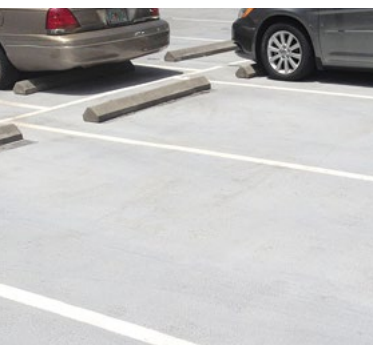
#### Macrylex with Kwartz or Resin Chips

Our MMA decorative flooring solution uses our premier Kwartz (quartz) aggregates that provide outstanding impact and abrasion resistance in the demanding conditions of a heavy-duty factory floor.

Macrylex systems with colorful resin chips provide an aesthetically pleasing and super-tough floor in commercial or residential garages.

#### Macrylex Elastomeric Systems

Engineered for car parks and the like, the Macrylex elastomeric deck system utilizes rapid-curing, flexible, MMA reactive resins that provide a return-to-service of just a few hours. The system withstands substrate movement and can be applied in freezing temperatures. In high-traffic areas the addition of hard aggregates helps eliminate wear caused by vehicle movement.





# Macrylex Methyl Methacrylate Resin Flooring Systems

## Engineered to Perform

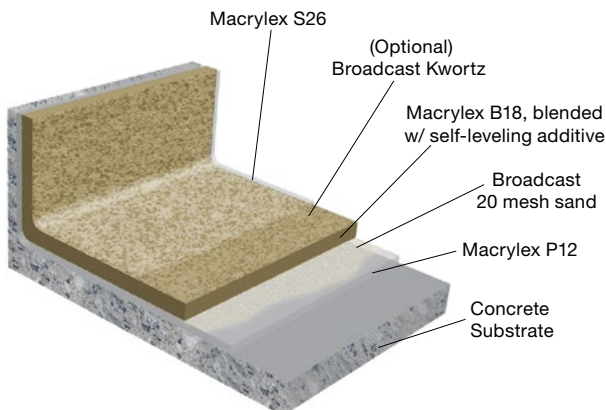
- Ultra-rapid cure, recoat time (1–2hrs.)
- UV resistant, non-chalking
- Excellent leveling and flow characteristics
- Use in extreme temperatures, below freezing
- Tremendous bond strength over concrete

## Maintenance & Safety

- Very low maintenance
- Available slip resistant finishes

## Sustainable

- VOC Compliant



Left: Macrylex B18 (body coat), Macrylex P12 (primer), & Macrylex S26 (top coat). Not pictured are optional resin chips, optional quartz aggregate and our other Macrylex products: sealers, hardener, high viscosity resin & flexible hybrid resin.